

M-5/10/20/40/75

AIR FLOW AMPLIFIERS

MAX VACUUM : 10 cm mercury.

BACK PRESSURE : 50 mm H₂O

ducted outlet.

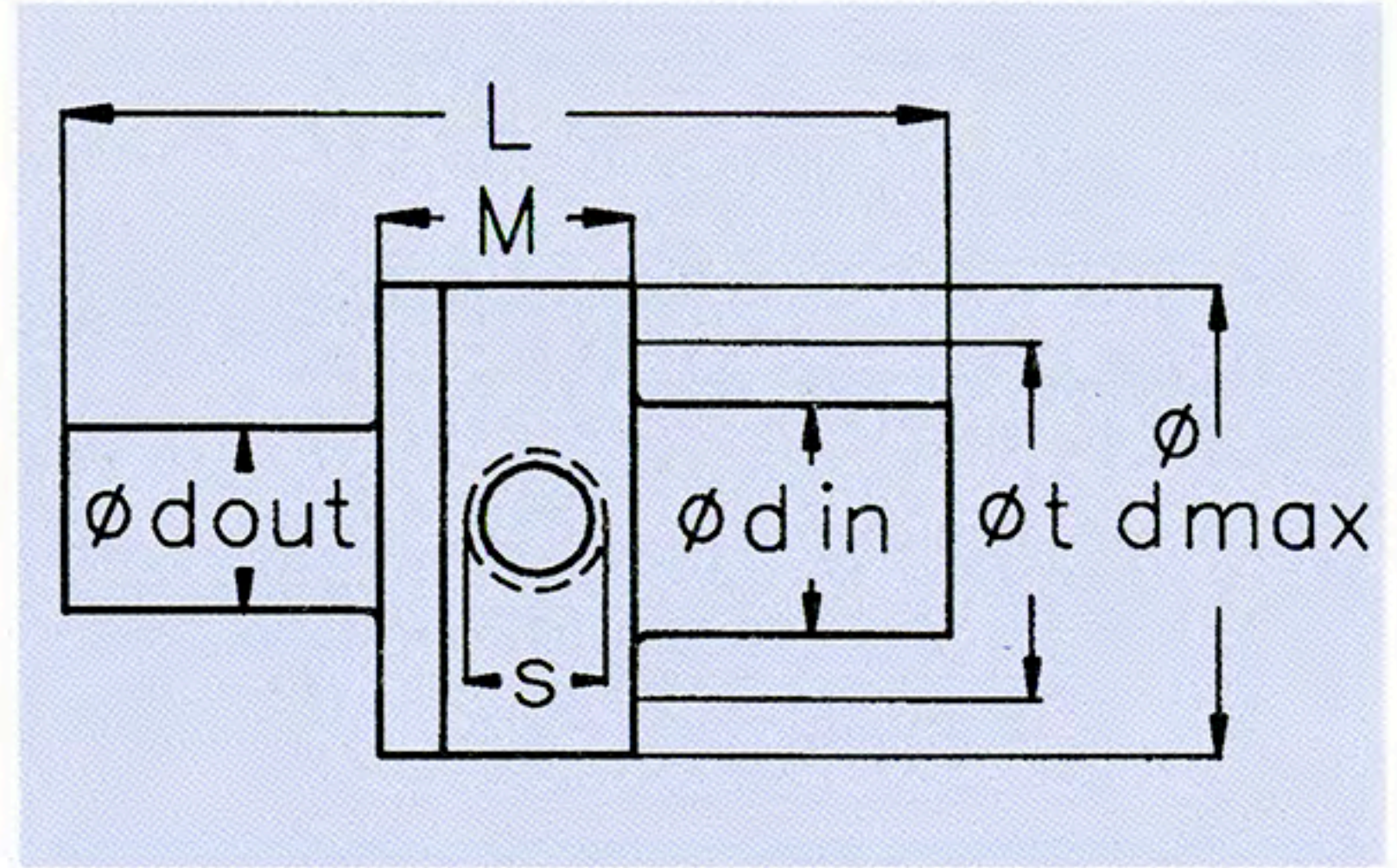
MAX BACK PRESSURE : 250 mm H₂O

ducted outlet.

SUPPLY PRESSURE : 2-6 Bar.

WORKING TEMP. : -20°C + 80°C.

MATERIALS : AL-2024.



AMPLIFIER MODEL		M 5	M 10	M 20	M 40	M 75
AIR CONSUMED Air gap 0.05 mm.	BAR	m ³ / min	m ³ / min	m ³ / min	m ³ / min	m ³ / min
	2	0.03	0.06	0.125	0.26	0.52
	3	0.04	0.07	0.175	0.36	0.68
	4	0.06	0.115	0.210	0.42	0.88
	5	0.08	0.15	0.265	0.5	1.08
	6	0.09	0.18	0.295	0.58	1.29
UNDUCTED FLOW 150 mm from outlet for M-10. 300 mm from outlet for M-20/40/75.	BAR	m ³ / min	m ³ / min	m ³ / min	m ³ / min	m ³ / min
	2	0.45	1.8	2.5	12	25
	3	0.53	2.1	3.3	16	29
	4	0.60	2.4	3.8	19	32
	5	0.65	2.6	4.4	22	36
	6	0.70	2.8	5.1	24	40
Outlet FLOW ducted Back pressure 125 mm H ₂ O for M-10. Back pressure 50 mm H ₂ O for M-20/40/75.	BAR	m ³ / min	m ³ / min	m ³ / min	m ³ / min	m ³ / min
	2	0.22	0.86	0.91	1.22	1.3
	3	0.12	0.47	1.42	1.97	5.9
	4	0.16	0.64	1.9	2.88	8.64
	5	0.19	0.76	2.55	4.14	12.5
	6	0.22	0.87	3.45	5.41	17
PIPE LENGTH outlet FLOW ducted For 50 mm H ₂ O pressure.		10 m	10 m	7 m	10 m	10 m
WEIGHT		0.025 kg	0.07 kg	0.18 kg	0.525 kg	3.0 kg
DIMENSIONS		mm	mm	mm	mm	mm
	in D	12.5	19	38	75	125
	out D	12.5	19	32	52	100
	max D	28.15	37	50	84	140
2 screws NC 8 x 32 x 1/4	T	21.65	29	41.5	72	120
	S	M5	1 / 8" BSP	1 / 4" BSP	3 / 8" BSP	1 / 2" BSP
	L	45.67	70	90	96	180
	M	15.83	21	30	35	60
Inside free hole	free d	5	10	20	40	75

GENERAL NOTE FOR DUCTED AMPLIFIER:

80% of pipe length is on vacuum side and 20% on outlet side.